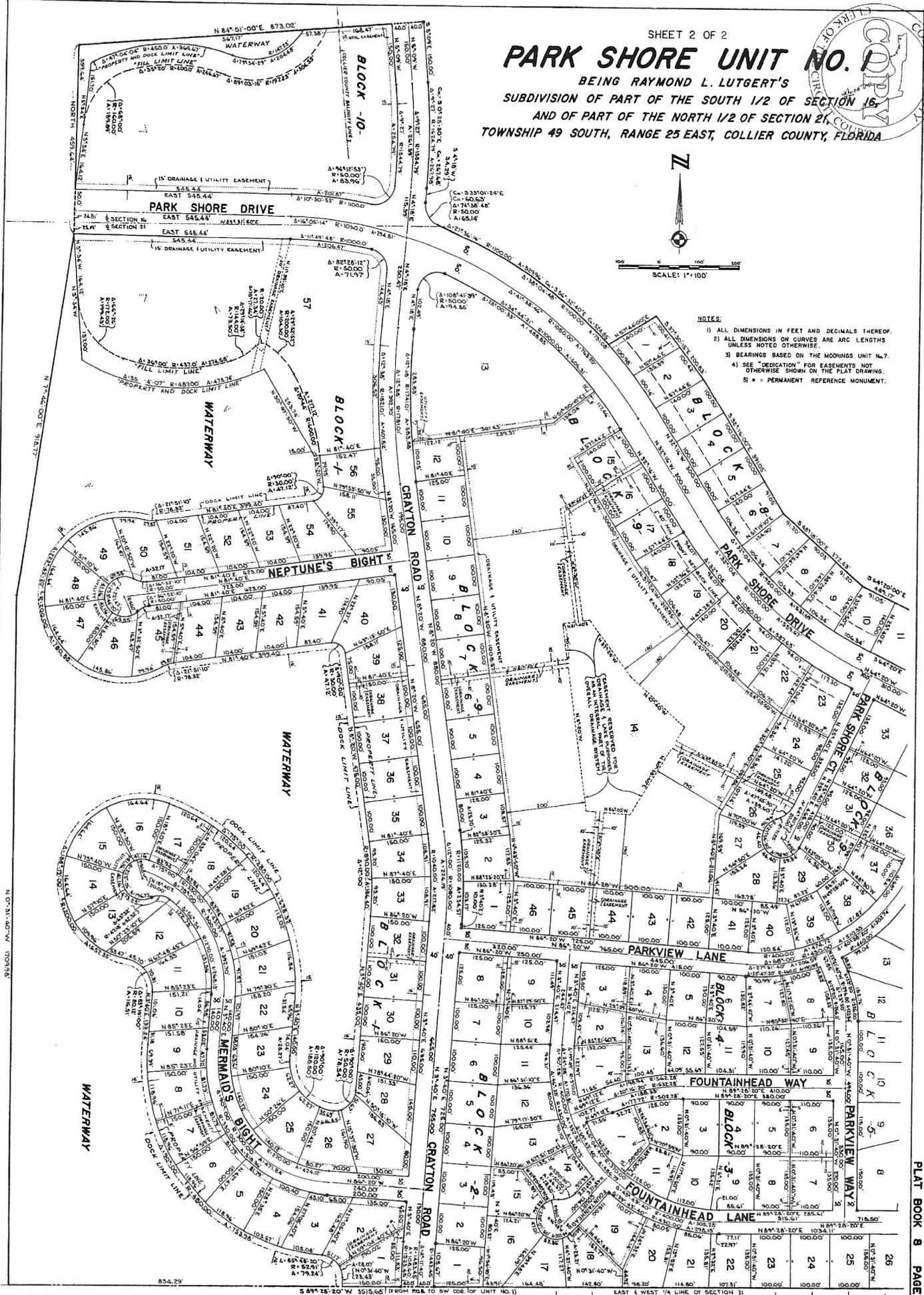


SHEET 2 OF 2
PARK SHORE UNIT NO. 1
 BEING RAYMOND L. LUTGERT'S
 SUBDIVISION OF PART OF THE SOUTH 1/2 OF SECTION 16,
 AND OF PART OF THE NORTH 1/2 OF SECTION 21,
 TOWNSHIP 49 SOUTH, RANGE 25 EAST, COLLIER COUNTY, FLORIDA



SCALE: 1"=100'

- NOTES:
- 1) ALL DIMENSIONS IN FEET AND DECIMALS THEREOF.
 - 2) ALL DIMENSIONS ON CURVES ARE ARC LENGTHS UNLESS NOTED OTHERWISE.
 - 3) BEARINGS BASED ON THE MONUMENTS UNIT N.7.
 - 4) SEE "DEDICATION" FOR EASEMENTS NOT OTHERWISE SHOWN ON THE PLAT DRAWING.
 - 5) * = PERMANENT REFERENCE MONUMENT.



WILSON, GREEN, MILLER AND SOLL, INC.
 REGISTERED ENGINEERS AND LAND SURVEYORS
 TAMPA, FLORIDA

Block 1 2 3 4 5 6 7 8 9 10 11 12 13
 THE MONUMENTS UNIT NO. 7 P.B. 17-18
 Block 1 2 3 4 5 6 7 8 9 10 11 12 13