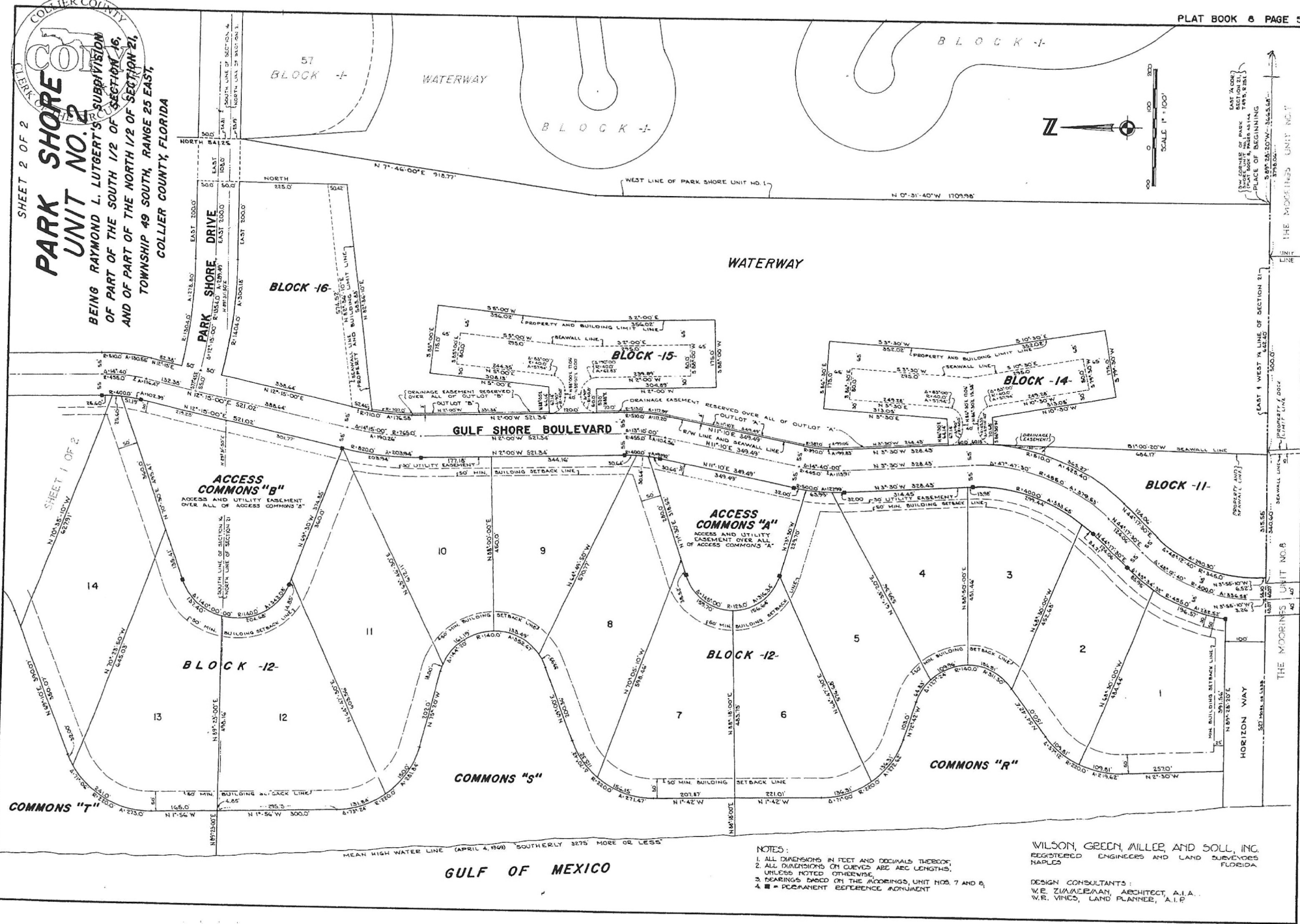


CLERK  
COLLIER COUNTY  
COMMISSION  
SHEET 2 OF 2  
**PARK SHORE UNIT NO. 2**  
BEING RAYMOND L. LUTBERT'S SUBDIVISION OF PART OF THE SOUTH 1/2 OF SECTION 16, AND OF PART OF THE NORTH 1/2 OF SECTION 21, TOWNSHIP 49 SOUTH, RANGE 25 EAST, COLLIER COUNTY, FLORIDA



NOTES:  
 1. ALL DIMENSIONS IN FEET AND DECIMALS THEREOF.  
 2. ALL DIMENSIONS ON CURVED ARE AEC LENGTHS, UNLESS NOTED OTHERWISE.  
 3. BEARINGS DECID ON THE RECORDS, UNIT NO. 7 AND 8.  
 4. ■ = PERMANENT REFERENCE MONUMENT

WILSON, GREEN, MILLER, AND SOLL, INC.  
 REGISTERED ENGINEERS AND LAND SURVEYORS  
 NAPLES, FLORIDA  
 DESIGN CONSULTANTS:  
 W.E. ZIMMERMAN, ARCHITECT, A.I.A.  
 W.R. VINCO, LAND PLANNER, A.L.P.